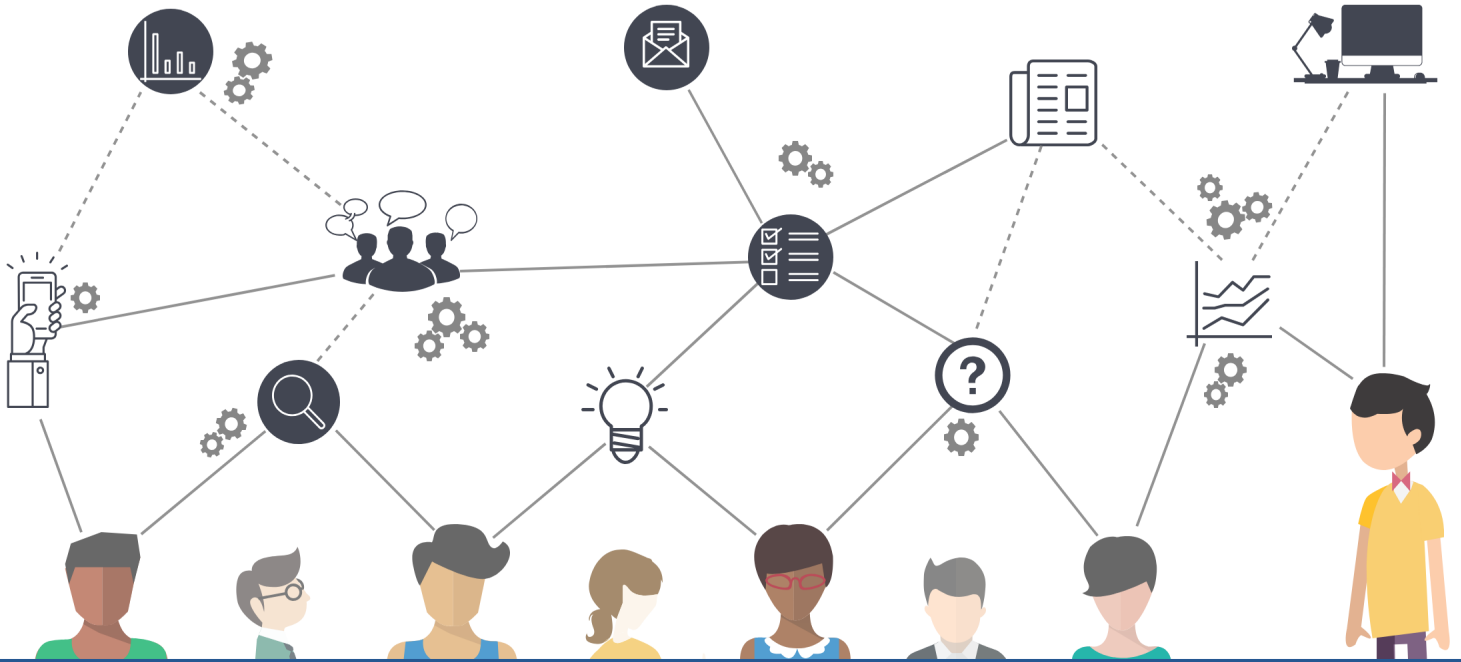


# AK Evaluation Conference

April 19, 2019  
BP Energy Center, Anchorage, AK



Present

Network

Share Ideas

Hosted by:  
**The Alaska Evaluation Network**  
[www.alaskaeval.org](http://www.alaskaeval.org)

## Keynote Speaker - Aimee White, AEA President Elect

A deeply committed Systems Oriented, Collaborative, Participatory, and Empowerment evaluation professional with 15 years of experience in community, nonprofit, corporate, and foundation evaluation practice. The majority of the work has been performed as the President and Principal Evaluator of Custom Evaluation Services Inc., a private independent evaluation consulting firm. The topical areas of expertise are complex systems change initiatives (population-level change) addressing whole community and whole life-span initiatives, brain science (adverse childhood experiences, trauma, and resilience) child abuse and neglect prevention, ex-offender reentry, and poverty mitigation. The client base over the years has included small program-centric nonprofits organizations, many United Ways (including local, state, and United Way Worldwide) focusing on complex community change initiatives, several large foundations funding complex community change initiatives, and state contracts attempting state-level systems change. Aimee's educational foundation for her evaluation work is Political Science, Educational Leadership, Educational Theory and Policy, and Social Work received from Vanderbilt University, The Pennsylvania State University, and The University of South Carolina. She also served on the American Evaluation Association's National Board of Directors as Board Member-At-Large for a three-year term ending in December 2017. She is currently serving as the President-Elect of the American Evaluation Association, her term is from 2019-2021.

## Conference Agenda - Friday, April 19, 2019

<b>8:30 AM</b>	<b>Registration/Check-in</b> <i>Light breakfast provided</i>
<b>9:00 AM</b> <b>Birch</b>	<b>Keynote: How Are You Creative Initiative</b> <i>Aimee White, AEA President Elect and Alaska State Council on the Arts' Arts Education Advisory Committee</i> <i>Committee Panel Members: Lena Jacobs, Saunders McNeill, Annie Calkins, JoAnne Knight, Alice Bioff, Robin Child, Hilary Seitz, Laura Forbes</i>
<b>10:30 AM</b>	<i>15 min break</i>
<b>10:45 AM</b>	<b>Breakout Sessions</b>
<b>Birch</b>	<b>I'm an Outsider: Evaluating Alaska Native Projects Across Cultures</b> <i>kas aruskevich, PhD</i>
<b>Alder/ Cottonwood</b>	<b>Using PARTNER Tool to Measure Early Childhood Coalitions</b> <i>Iris Matthews</i>
<b>Aspen</b>	<b>Accessible Data Visualization</b> <i>Julie Atkinson</i>
<b>11:15 AM</b>	<i>15 min break</i>
<b>11:30 AM</b>	<b>Breakout Sessions</b>
<b>Birch</b>	<b><i>Birds of a Feather</i></b> <b>I'm an Outsider: Evaluating Alaska Native Projects Across Cultures - Sharing My Practice - Learning from Others</b> <i>kas aruskevich, PhD</i>
<b>Alder/ Cottonwood</b>	<b><i>Birds of a Feather</i></b> <b>Evaluating Youth Focused Programming: Sharing Successful Strategies &amp; Problem Solving</b> <i>Iris Matthews</i>
<b>Aspen</b>	<b>Partnerships: Multi-level Strategies for Research Success, Growth, and Impact</b> <i>LynnAnn Tew and Julie Atkinson</i>
	<b>Exploring the Impact of Local Options Laws in Rural Alaska</b> <i>Emily Alvey</i>
	<b>The Costs and Consequences of Community Water Fluoridation Cessation for Medicaid-Eligible Children and Adolescents in Juneau, Alaska</b> <i>Jennifer Meyer</i>
<b>12:15 PM</b>	<b>Lunch</b> <i>Tickets for BP Cafeteria provided</i>

1:15 PM Birch	Poster Session
1:30 PM Birch	<p><b>Ignite Sessions</b></p> <p>Inviting Story as a Framework for a Formative Evaluation - <i>Corrie Whitmore, PhD and Nyabony Gat</i></p> <p>Picture This: Increasing Engagement in Evaluation by Co-Creating Infographics - <i>Meghan Woods and Curtis Smith</i></p> <p>Think Outside the Box: How Mixed Methodology Allowed for Adequate Identification and Measurement of Nurse Home Visitors, Strategies to Increase Father Participation in Home Visits - <i>Jessica Passini</i></p> <p>Society of Research Administrators Alaska Chapter - <i>Jennifer Redmond, Cindy Detablan, Adam Chisom</i></p> <p>Working Differently in Alaska: How to Innovate as We Educate? - <i>Alda Norris</i></p>
2:00 PM	15 min break
2:15 PM	<b>Breakout Sessions</b>
Birch	Evaluating a Culturally Relevant Online Cancer Education Initiative: Learning with Alaska's CHA/Ps <i>Katie Cueva, Laura Revels, Michelle Hensel, and Mark Dignan</i>
Spruce/ Willow	Evaluating State Needs: Developing an Executive-Level Academic Leadership Program <i>Kate Govaars, Dr. Nicole Cundiff, Dr. Pips Veazey, Natalie Harrison, and Dr. Phillip Price</i>
Aspen	The Overrepresentation of Alaska Natives in the Criminal Justice System: Some Causes and Concerns <i>Raechyl Huisingh</i>
2:45 PM	15 min break Snacks Available
3:00 PM	<b>Breakout Sessions</b>
Birch	<i>Birds of a Feather</i> Working Differently in Alaska: How to Innovate as We Evaluate? <i>Alda Norris and John Klingbeil</i>
Spruce/ Willow	<i>Birds of a Feather</i> Assessing the Effectiveness of Remote Leaders <i>Kate Govaars</i>
Aspen	An Evaluation of the Alaska Behavioral Risk Factor Surveillance System <i>Katie Cueva and Andrea Fenaughty</i> ----- Psychophysiology Indicators of Safety Video Message Processing <i>Marcia Howell, Paul Bolls, and Diana Stark Ekman</i>
3:45 PM	15 min break
4:00 PM	<b>Closing Plenary: Update from the American Evaluation Association and How to Get Involved</b> <i>Aimee White, AEA President Elect</i>
5:15 PM	Wrap up and Evaluations

**Thank you for attending the 2019 Alaska Evaluation Conference!**

## Conference Committee

Danielle Reed, UAA Center for Human Development, AKEN President

Rebekah Moras, UAA Center for Human Development, AKEN Vice-President

Alexandra Olah, UAA Center for Human Development, AKEN Membership Chair

Emily Alvey, Undergraduate Student, AKEN Student Liason

Karen Heath, UAA Center for Human Development, AKEN Member

Lanny Mommsen, Governor's Council on Disabilities and Special Education, AKEN Member

## A Special Thanks To

Land Acknowledgement - Aaron Leggett, President, Native Village of Eklutna

Aimee White, AEA President Elect

Alaska State Council of the Arts - Arts Education Advisory Committee

BP Energy Center

Alaska Native Tribal Health Consortium

Hays Research Group LLC - [www.haysresearch.com](http://www.haysresearch.com)

## Conference Evaluation

Please take a few minutes to complete the conference evaluation. Your feedback is very important to us as we plan for future events and conferences.



<http://bit.ly/AKEN2019Eval>